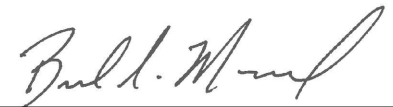
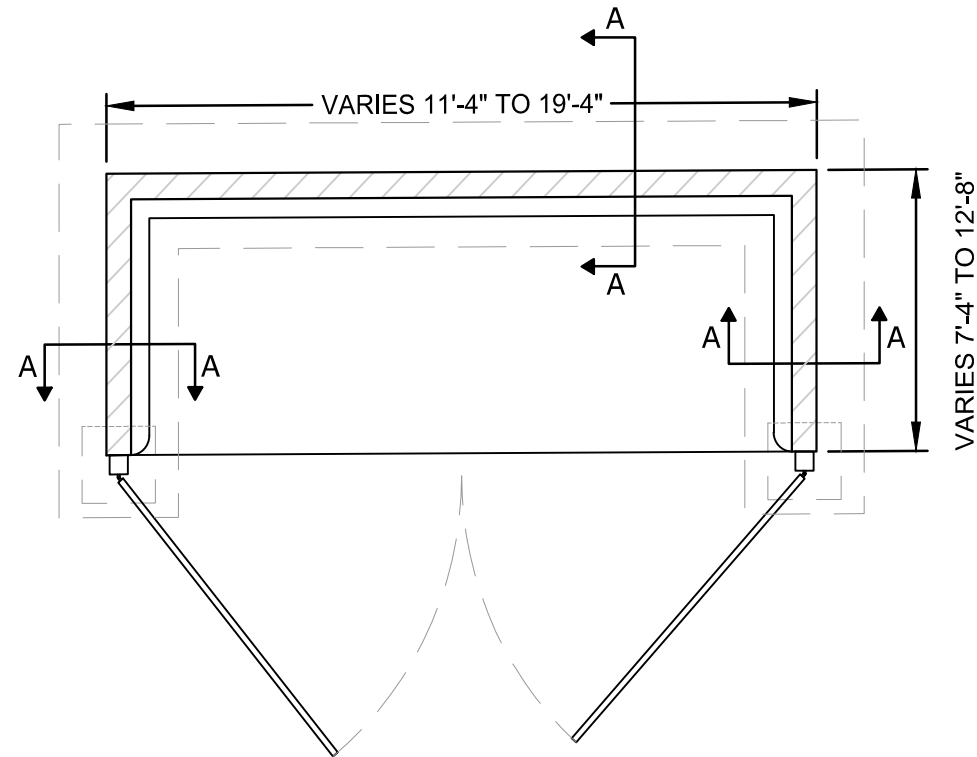


GENERAL NOTES:

- ① WALLS ARE TO BE 6" MIN. CMU BLOCK WITH STUCCO FINISH OR DECORATIVE BLOCK MASONRY OF SIMILAR MATERIALS CONSISTENT WITH THE ARCHITECTURE, COLOR, AND ACCENT MATERIALS OF PRIMARY BUILDING. *ALL CMU CELLS TO BE SOLID GROUTED. GROUT TO FOLLOW 2018 GREEN BOOK SECTION 202-2.2.2
- ② GATES ARE TO BE STEEL MESH AND FRAME OR SOLID METAL CONSTRUCTION
- ③ SWIVEL POINTS ON DOORS SHALL BE LOCATED OUTSIDE OF THE OPENING AREA OF THE ENCLOSURE
- ④ SWIVEL POINTS SHALL BE ATTACHED TO CONCRETE FILLED STEEL POST/COLUMNS AT THE ENDS OF WALLS
- ⑤ TRASH ENCLOSURE SHALL NOT EXCEED A SLOPE OF 2% MAX IN ANY DIRECTION OR A MIN SLOPE OF 0.5% IN ANY DIRECTION.
- ⑥ TRASH ENCLOSURE SHALL HAVE 5" CONCRETE OR 5 INCHES MINIMUM OF AC PAVEMENT FOR A 8' APRON IN FRONT OF ENCLOSURE
- ⑦ 3" MINIMUM COVER TOP OF FOOTING TO FINISH GROUND
- ⑧ DEVELOPER TO CONTACT PLANNING DEPARTMENT TO VERIFY QUANTITY AND TYPE OF RECEPTACLES.
- ⑨ DEVELOPER SHALL DESIGN ENCLOSURE TO MATCH BUILDING ARCHITECTURAL FEATURES PER CITY STANDARD.
- ⑩ ANY MODIFICATIONS TO CITY STANDARD TRASH ENCLOSURE SHALL BE SUBJECT TO ENGINEERING DEPARTMENT REVIEW AND APPROVAL.



CITY OF BARSTOW ENGINEERING DEPARTMENT - APPROVED BY:		CITY OF BARSTOW - STANDARD PLANS	
 BRAD S. MERRELL CONSULTING CITY ENGINEER		TRASH ENCLOSURE STANDARD DETAIL	
		USE WITH STANDARD SPECIFICATIONS FOR PUBLIC WORK CONSTRUCTION	
APPROVED BY: BRAD S. MERRELL		TITLE: CONSULTING CITY ENGINEER	
DESIGNED: CP	R.C.E. No. 49423	STANDARD PLAN NO. TE-1	
DRAWN: RHL	DATE: 11/09/2018		
SCALE: N.T.S.	REV:	SHEET 1 OF 5	



GENERAL NOTES:

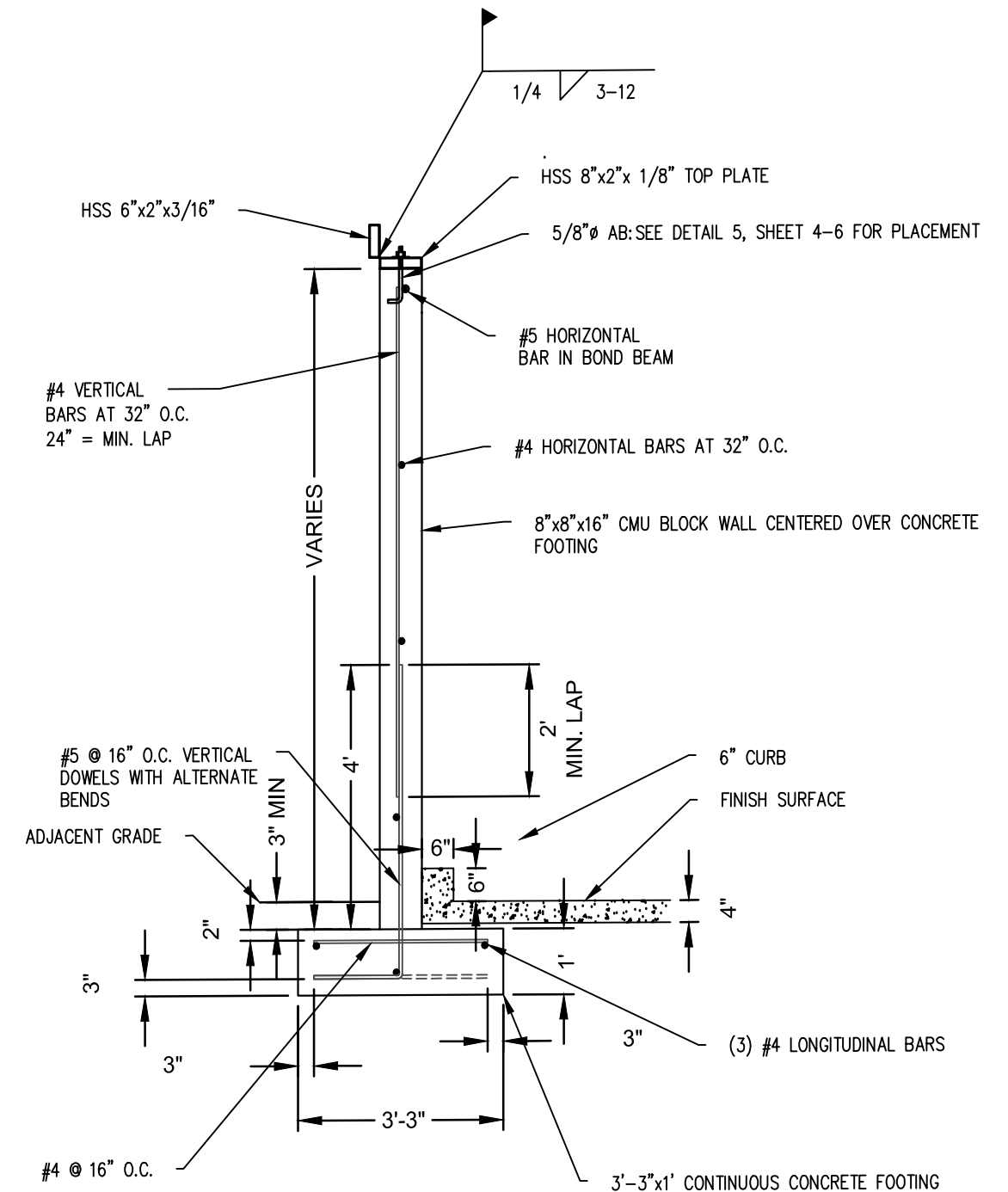
ALL HSS SECTIONS TO HAVE 36 KSI MINIMUM (MIN.) STRENGTH

ALL 5/8"Ø ANCHOR BOLTS (AB) TO HAVE MIN. EMBEDMENT OF 7", PROJECTION OF 3.5", AND A 2.5" BEND

ALL CMU CELLS TO BE SOLID GROUTED. GROUT TO FOLLOW 2018 GREEN BOOK SECTION 202-2.2.2


ALL REBAR TO BE ASTM A615, 40 KSI FOR #4 BARS AND SMALLER AND 60 KSI FOR #5 BARS AND GREATER. ALL LAP LENGTHS TO BE MIN. 24". HORIZONTAL CORNER BARS MUST LAP MIN. 24" FROM AT LEAST ONE SIDE

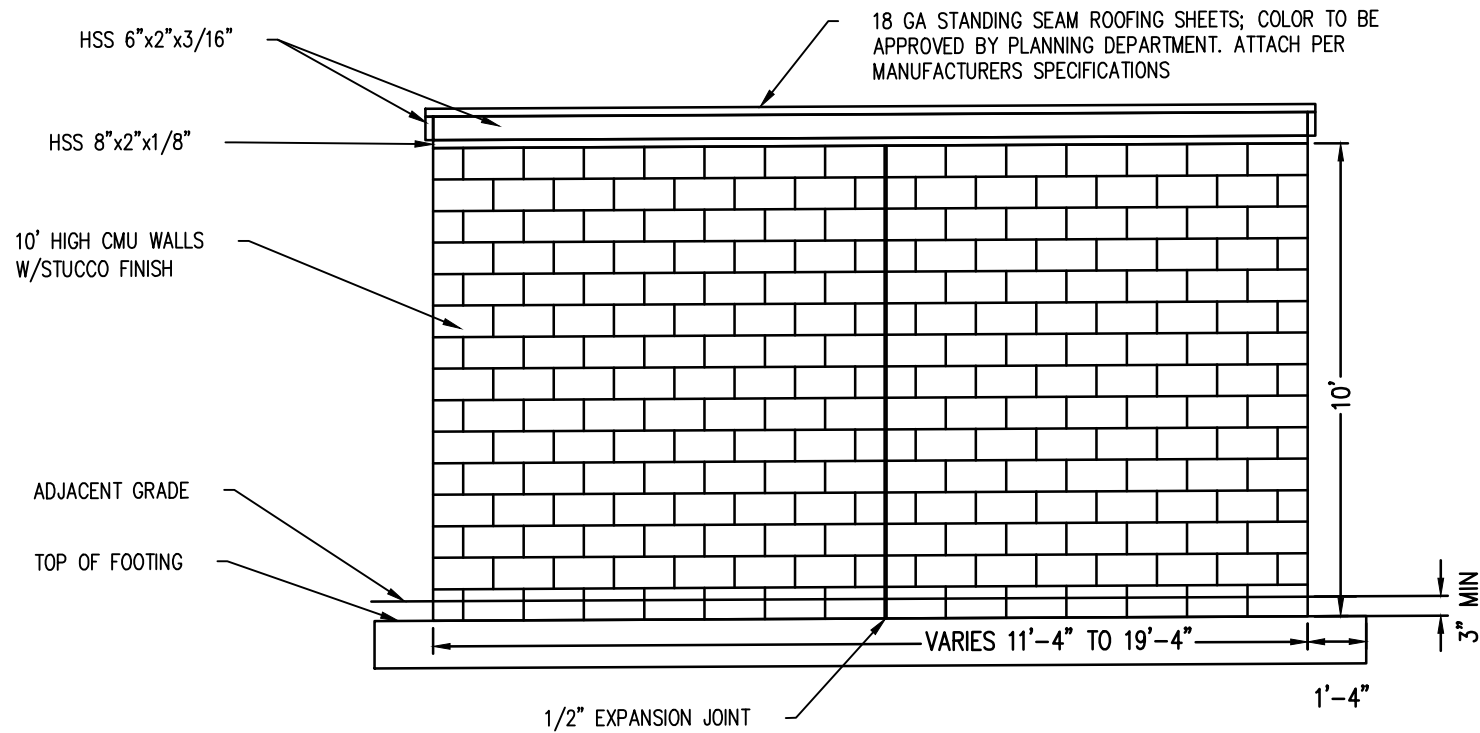
ALL CONCRETE TO HAVE MIN. 3,000 PSI 28DAY STRENGTH



SECTION A-A



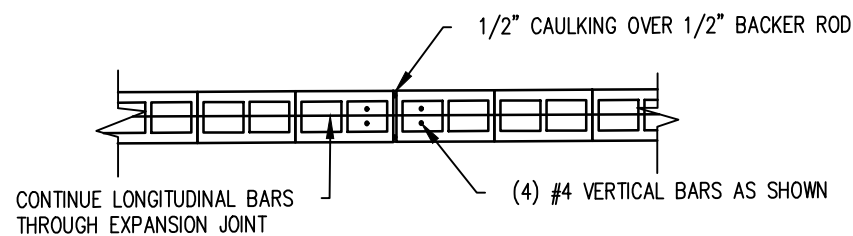
CITY OF BARSTOW ENGINEERING DEPARTMENT - APPROVED BY:		CITY OF BARSTOW - STANDARD PLANS	
 BRAD S. MERRELL CONSULTING CITY ENGINEER		TRASH ENCLOSURE STANDARD DETAIL	
		USE WITH STANDARD SPECIFICATIONS FOR PUBLIC WORK CONSTRUCTION	
APPROVED BY: BRAD S. MERRELL		TITLE: CONSULTING CITY ENGINEER	
DESIGNED: CP	R.C.E. No. 49423	STANDARD PLAN NO. TE-1	
DRAWN: RHL	DATE: 11/09/2018		
SCALE: N.T.S.	REV:	SHEET 2 OF 5	



REAR ELEVATION

GENERAL NOTES:

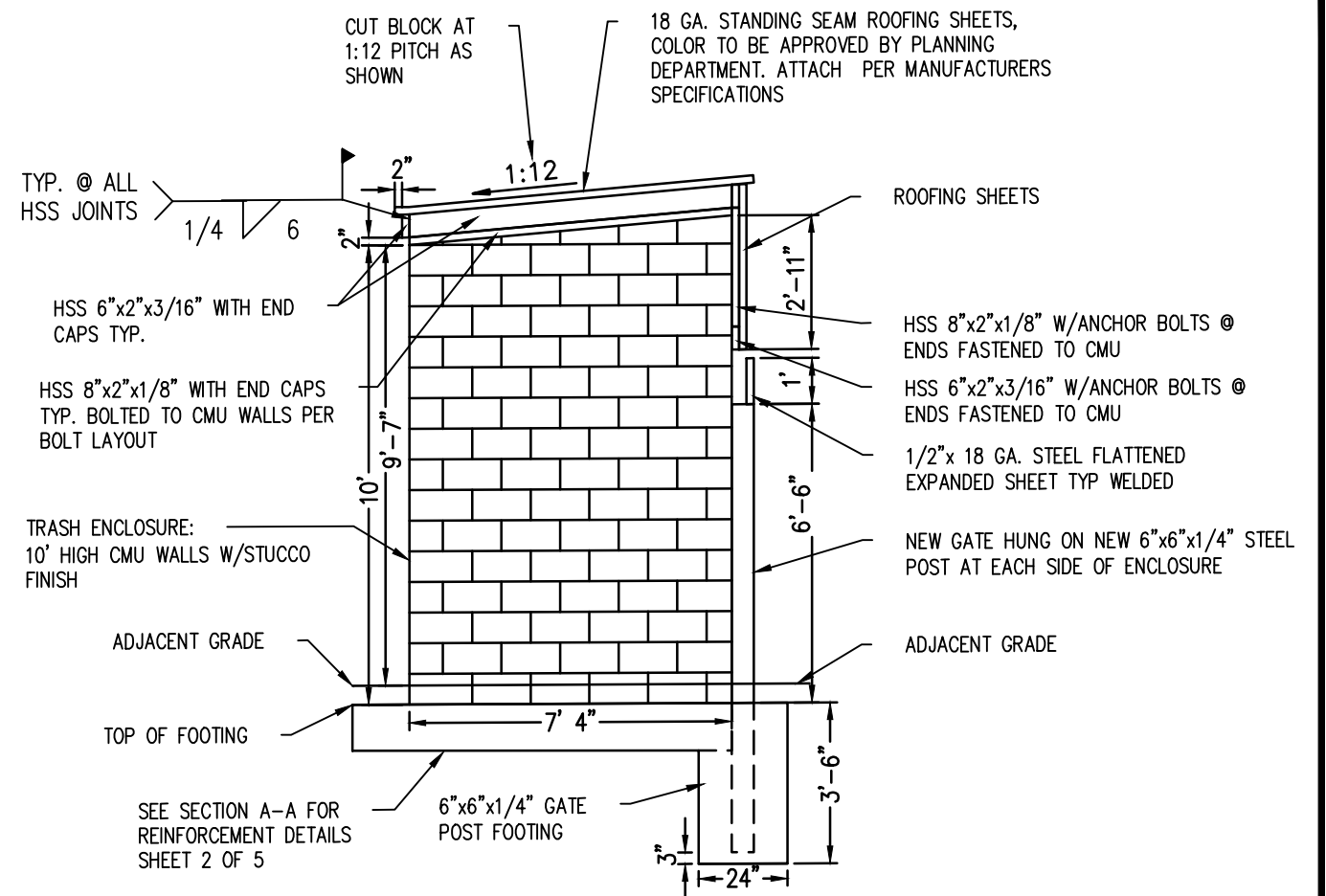
ALL 5/8"Ø ANCHOR BOLTS (AB) TO HAVE MINIMUM (MIN.) EMBEDMENT OF 7", PROJECTION AS SPECIFIED, AND A 2.5" BEND



1/2" EXPANSION JOINT

GENERAL NOTES:

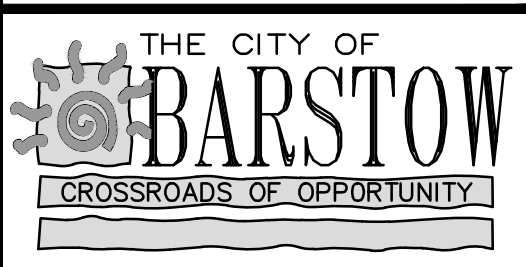
CAULKING AND FOAM BACKER ROD TO BE SUBMITTED AND APPROVED BY CITY PLANNING DEPARTMENT
 CAULKING TO BE NON-SAG POLYURETHANE SUITABLE FOR EXTERIOR EXPOSURE
 BACKER ROD TO BE INSTALLED TO ALLOW 0.25" THICK CAULKING



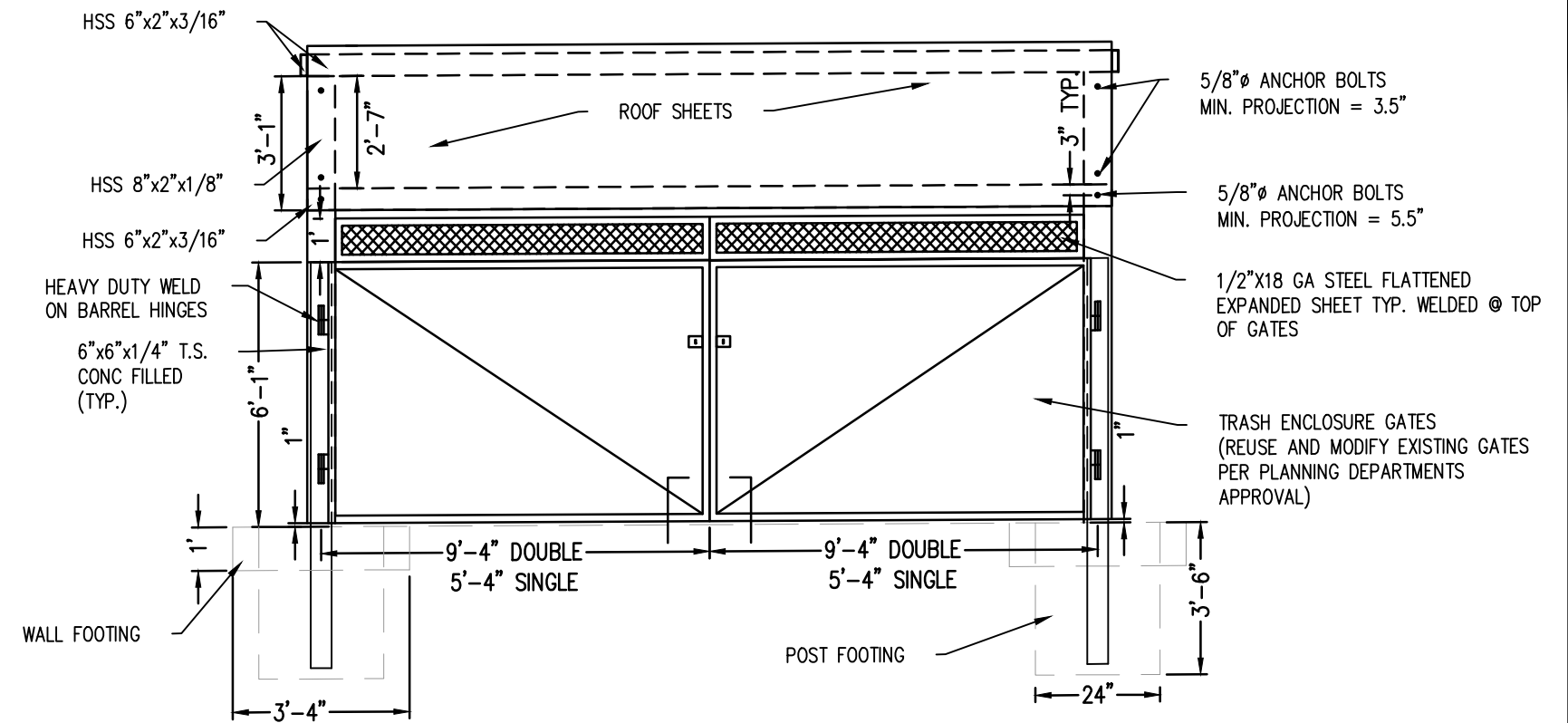
SIDE ELEVATION

GENERAL NOTES:

ALL HSS SECTIONS TO HAVE 36 KSI MINIMUM (MIN.) STRENGTH
 ALL CMU CELLS TO BE SOLID GROUTED. GROUT TO FOLLOW 2018 GREEN BOOK SECTION 202-2.2.2
 ALL REBAR TO BE ASTM A615, 40 KSI FOR #4 BARS AND SMALLER AND 60 KSI FOR #5 BARS AND GREATER. ALL LAP LENGTHS TO BE MIN. 24". HORIZONTAL CORNER BARS MUST LAP MIN. 24" FROM AT LEAST ONE SIDE
 ALL CONCRETE TO HAVE MIN. 3,000 PSI 28DAY STRENGTH



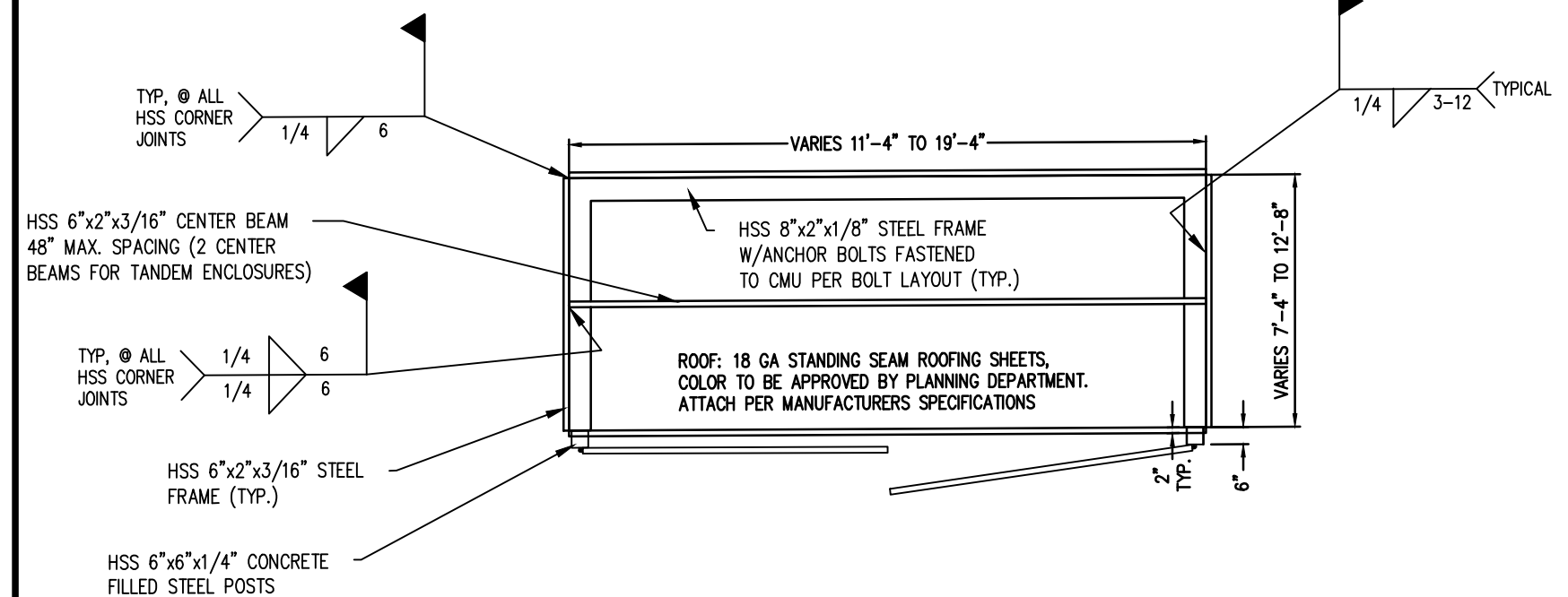
CITY OF BARSTOW ENGINEERING DEPARTMENT - APPROVED BY:		CITY OF BARSTOW - STANDARD PLANS	
 BRAD S. MERRELL CONSULTING CITY ENGINEER		TRASH ENCLOSURE STANDARD DETAIL	
		USE WITH STANDARD SPECIFICATIONS FOR PUBLIC WORK CONSTRUCTION APPROVED BY: BRAD S. MERRELL TITLE: CONSULTING CITY ENGINEER	
DESIGNED: CP	R.C.E. No. 49423	STANDARD PLAN NO. TE-1	
DRAWN: RHL	DATE: 11/09/2018		
SCALE: N.T.S.	REV:	SHEET 3 OF 5	



FRONT ELEVATION

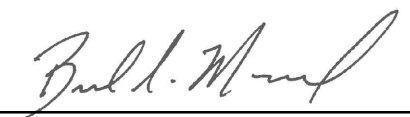
GENERAL NOTES:

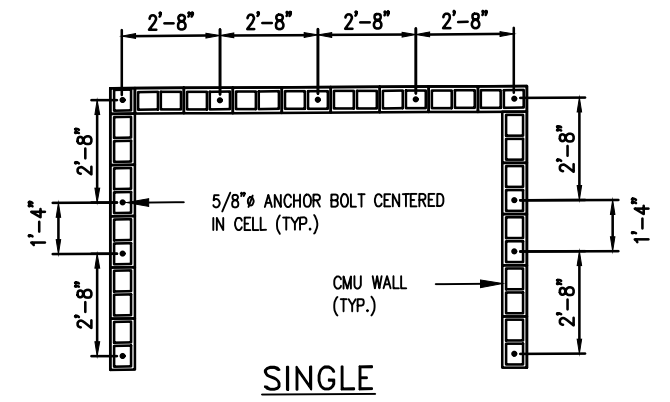
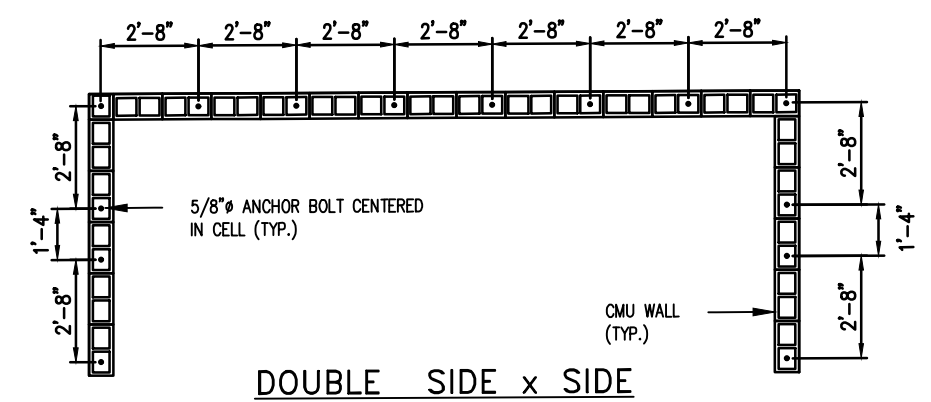
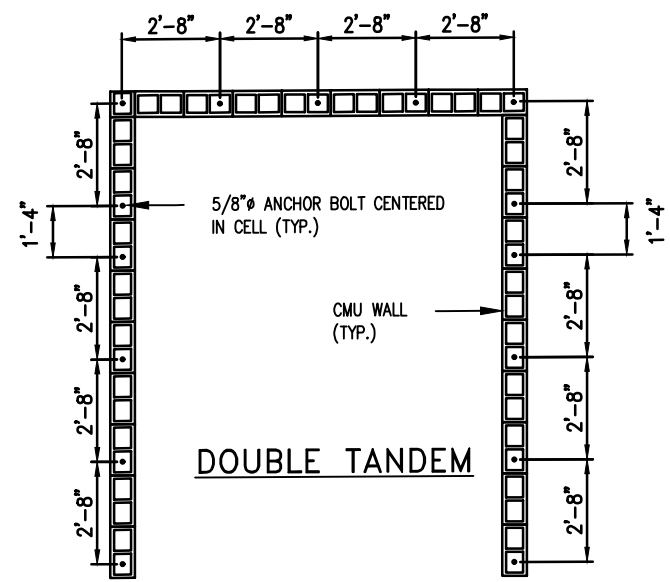
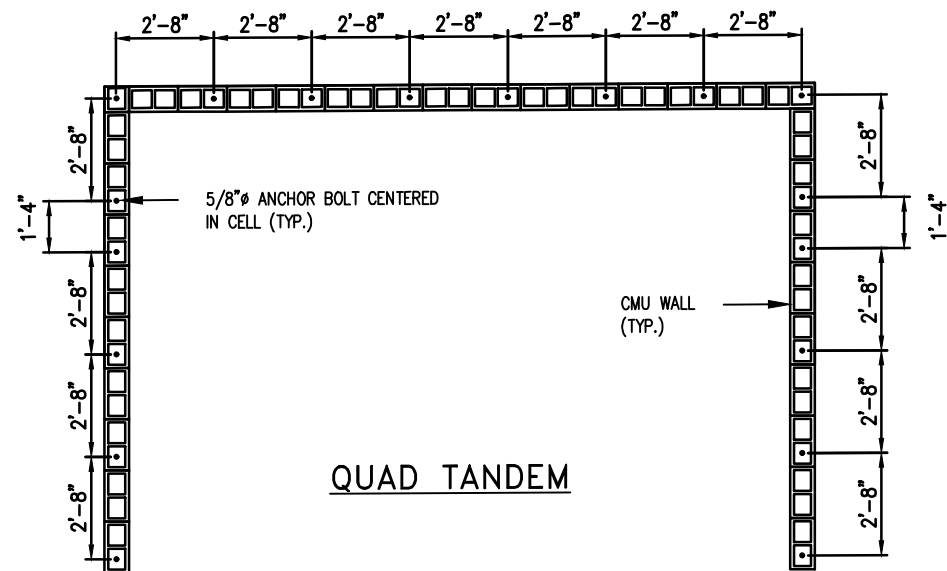
ALL 5/8"Ø ANCHOR BOLTS (AB) TO HAVE MINIMUM (MIN.) EMBEDMENT OF 7", PROJECTION AS SPECIFIED, AND A 2.5" BEND



PLAN VIEW/ROOF FRAMING



CITY OF BARSTOW ENGINEERING DEPARTMENT - APPROVED BY:		CITY OF BARSTOW - STANDARD PLANS	
 BRAD S. MERRELL CONSULTING CITY ENGINEER		TRASH ENCLOSURE STANDARD DETAIL	
		USE WITH STANDARD SPECIFICATIONS FOR PUBLIC WORK CONSTRUCTION APPROVED BY: BRAD S. MERRELL TITLE: CONSULTING CITY ENGINEER	
DESIGNED: CP	R.C.E. No. 49423	STANDARD PLAN NO. TE-1	
DRAWN: RHL	DATE: 11/09/2018		
SCALE: N.T.S.	REV:	SHEET 4 OF 5	




BOLT LAYOUT

GENERAL NOTES:

ALL 5/8" ϕ ANCHOR BOLTS (AB) TO HAVE MINIMUM (MIN.) EMBEDMENT OF 7", PROJECTION OF 3.5", AND A 2.5" BEND

ALL CMU CELLS TO BE SOLID GROUTED. GROUT TO FOLLOW 2018 GREEN BOOK SECTION 202-2.2.2



CITY OF BARSTOW ENGINEERING DEPARTMENT – APPROVED BY:		CITY OF BARSTOW – STANDARD PLANS	
 BRAD S. MERRELL CONSULTING CITY ENGINEER		TRASH ENCLOSURE STANDARD DETAIL	
		USE WITH STANDARD SPECIFICATIONS FOR PUBLIC WORK CONSTRUCTION	
APPROVED BY: BRAD S. MERRELL TITLE: CONSULTING CITY ENGINEER		DESIGNED: CP R.C.E. No. 49423	STANDARD PLAN NO. TE-1
DATE: 11/09/2018		DRAWN: RHL DATE: 11/09/2018	SHEET 5 OF 5
		SCALE: N.T.S. REV:	