



GENERAL PLAN 2045

# General Plan Update Process

---

April 26, 2023  
Town Hall Meeting



# VISION

FROM 2015

Barstow is a community where visitors explore, workers reside and raise their families and children grow up to find jobs at livable wages, enabling them to remain in the community to develop their own households.





**2015 – 2023**  
new jobs, homes, stores, and  
infrastructure improvements



# Future Growth

- Barstow International Gateway
- Hospitality industry
- Industrial jobs
- Electric vehicle infrastructure
- Single and multifamily housing
- Retention and attraction of families and young adults





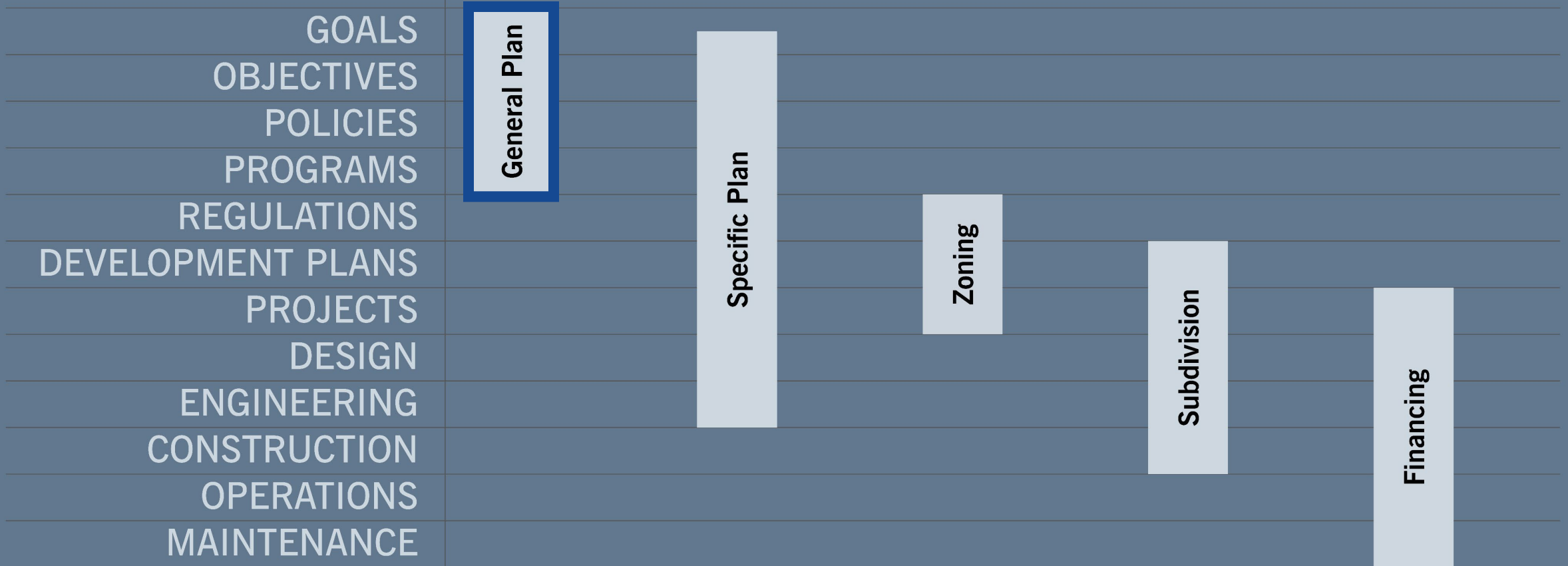
# PLANNING SYSTEMS

HOW CITIES PLAN FOR, REGULATE, AND MANAGE GROWTH



## PLANNING LEVELS

## SYSTEM COMPONENTS



# What is a General Plan?

- City's comprehensive and long-term plan for growth and improvement
  - Overall vision of Barstow's desired future
  - Goals, policies, and maps to guide decisions when evaluating projects and investments
  - Actions to identify next steps for implementation





# What a General Plan is NOT

- Zoning
- Development standards (e.g., parking standards, setbacks)
- Design guidelines
- A guarantee for project approvals





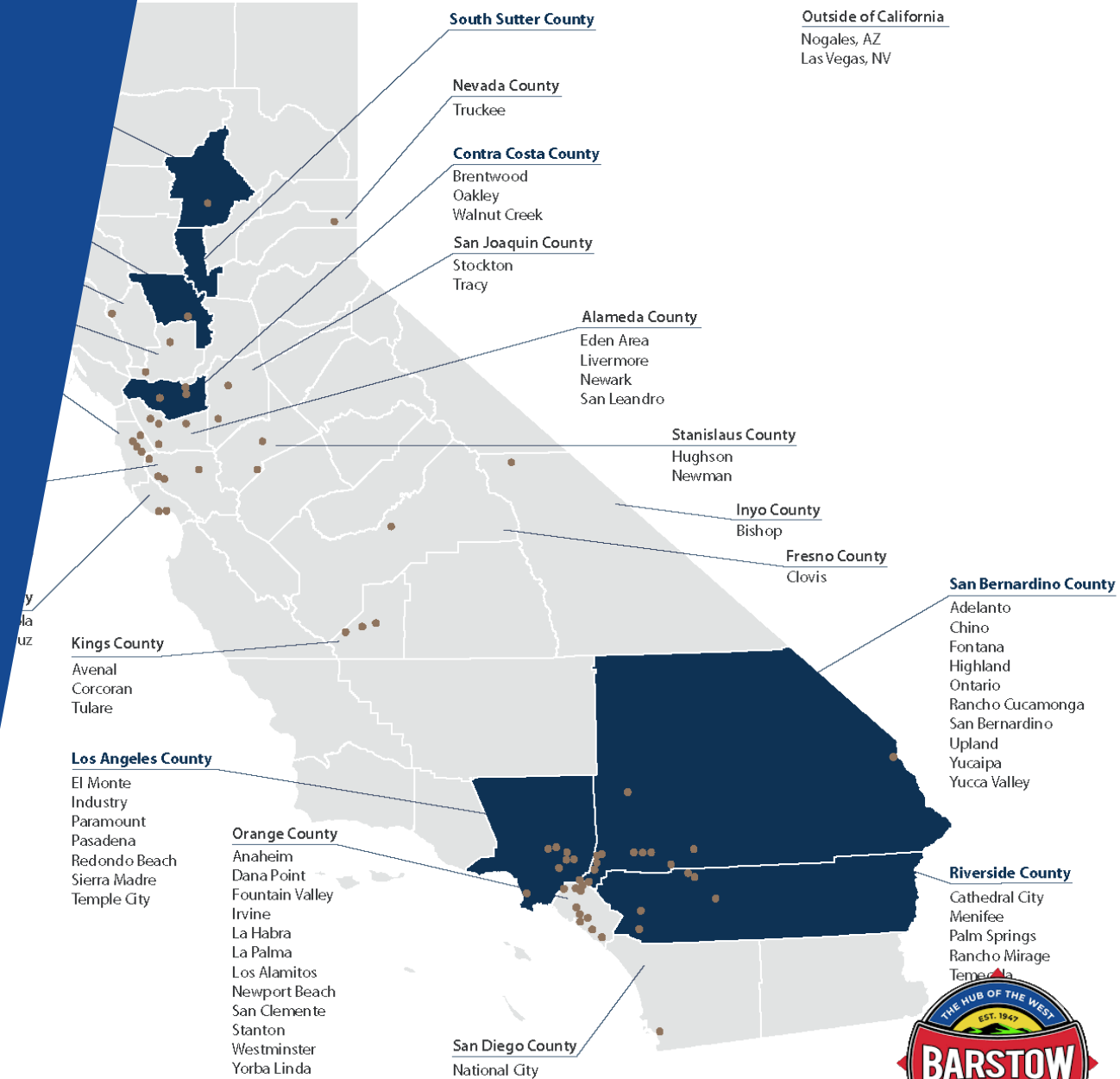
- Planning, Environmental, & Design
- Public and private sector clients
- 130+ General Plans in California
  - San Bernardino County, Needles, Ontario, Rancho Cucamonga



Colin Drukker  
Planning



Mark Teague  
Environmental





# WHY UPDATE THE CITY'S GENERAL PLAN?

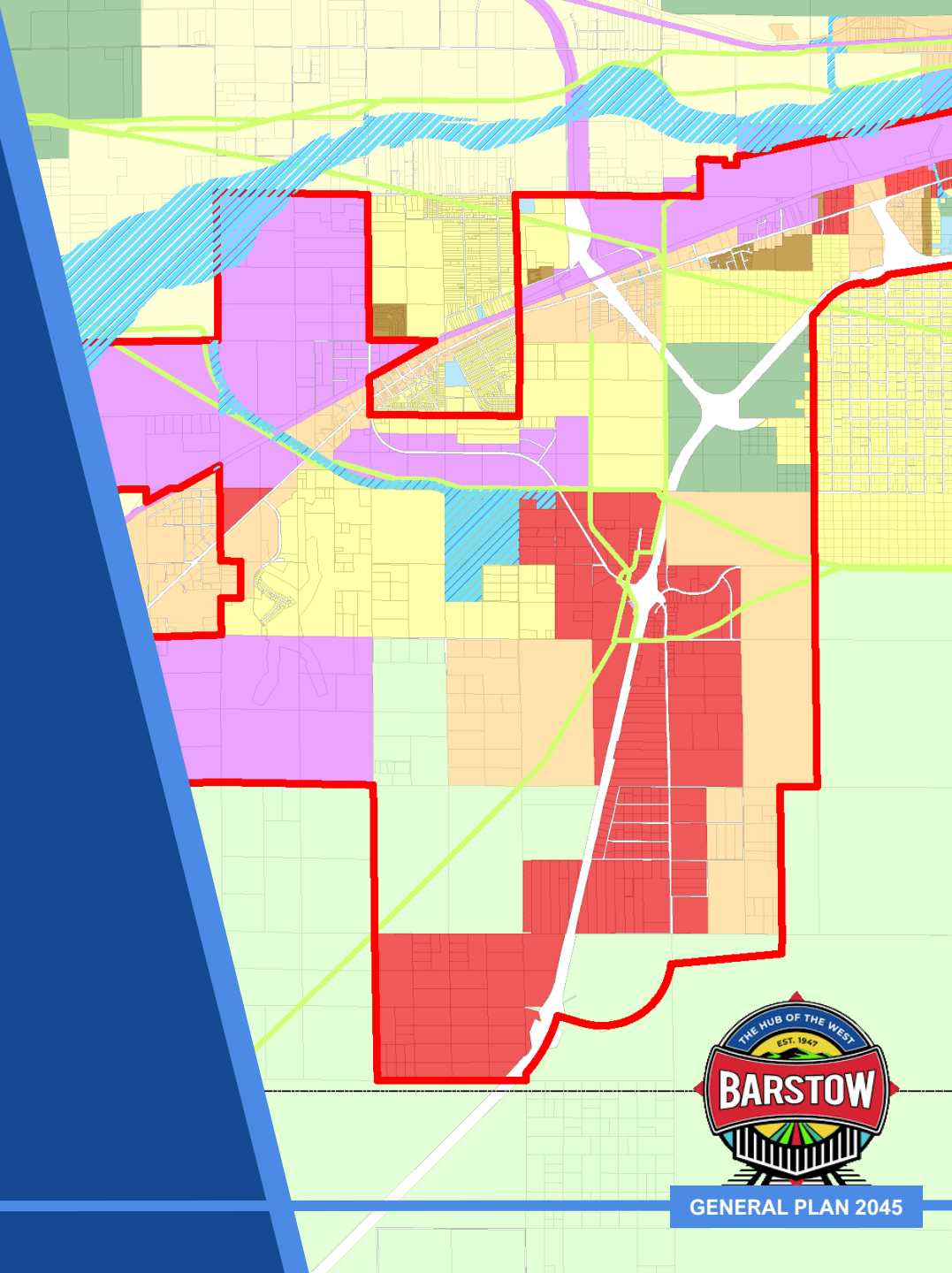
TOWN HALL | APRIL 2023



GENERAL PLAN 2045

# Current General Plan

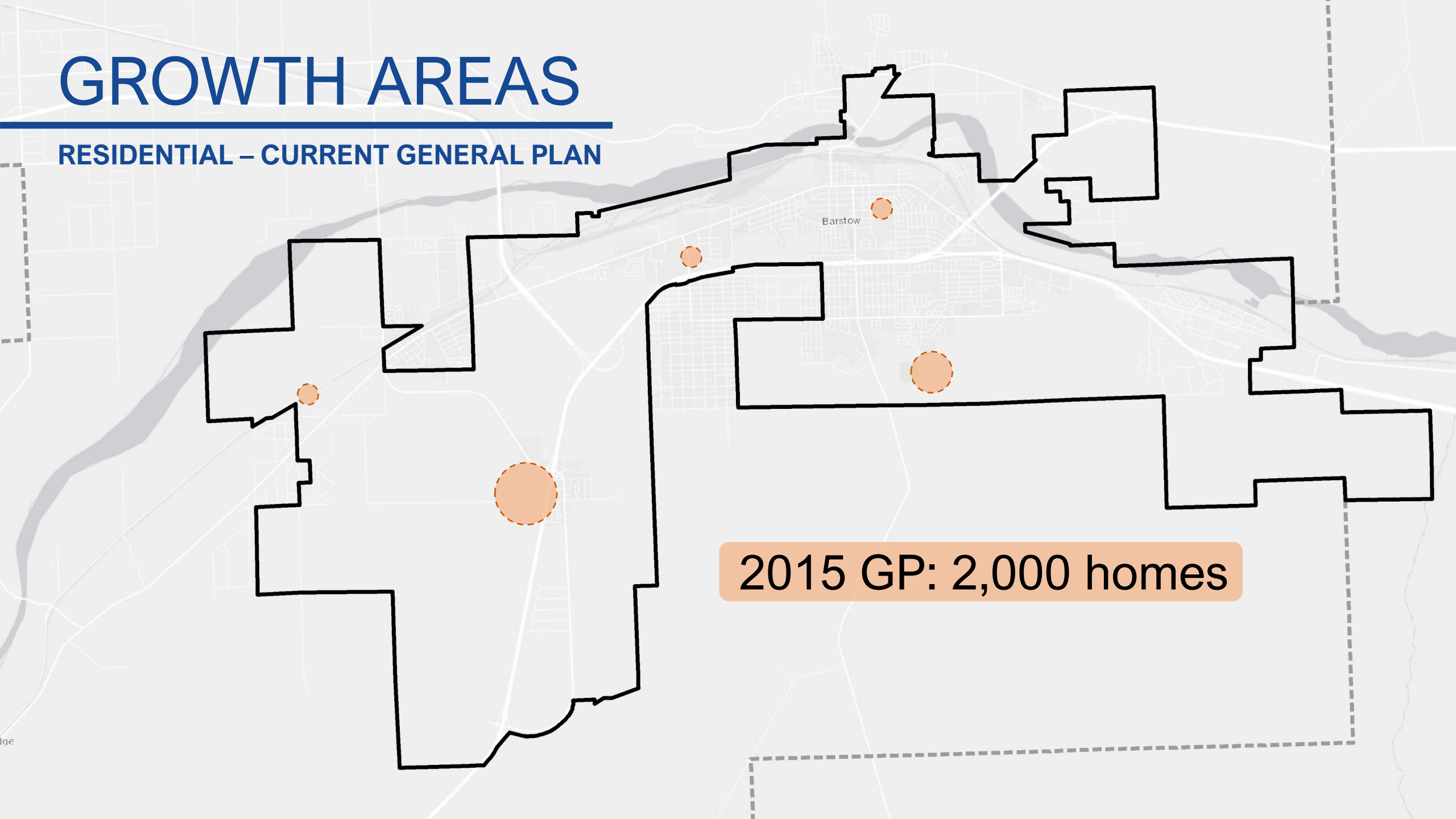
- Last updated initiated in 2013 and adopted in 2015
- Interim update / 2020 horizon year
- General Plans routinely updated ever 10 years
- Reflect new conditions and opportunities
  - Socioeconomic trends
  - Market conditions
  - Changes in state laws





# GROWTH AREAS

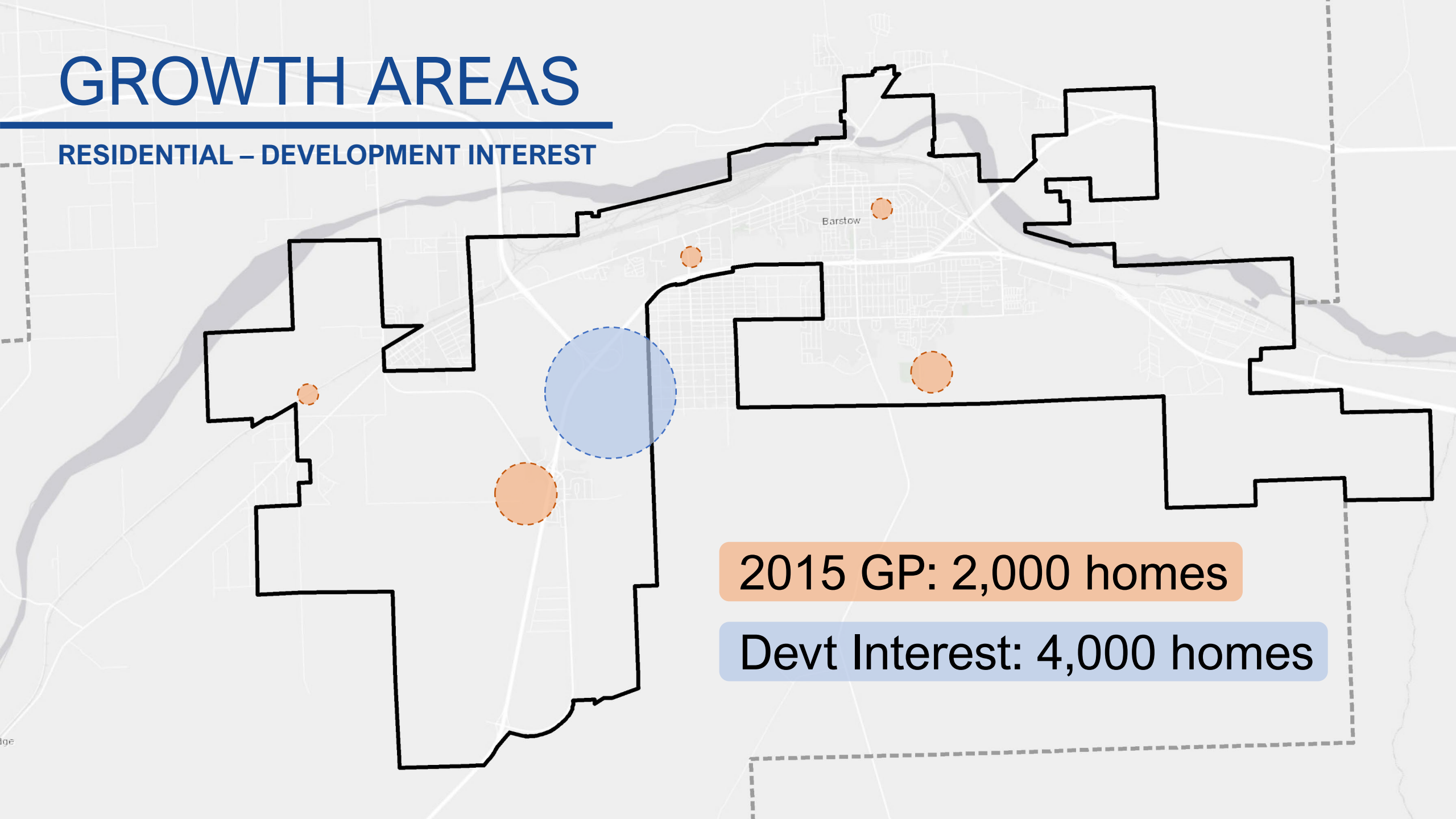
RESIDENTIAL – CURRENT GENERAL PLAN



2015 GP: 2,000 homes

# GROWTH AREAS

## RESIDENTIAL – DEVELOPMENT INTEREST



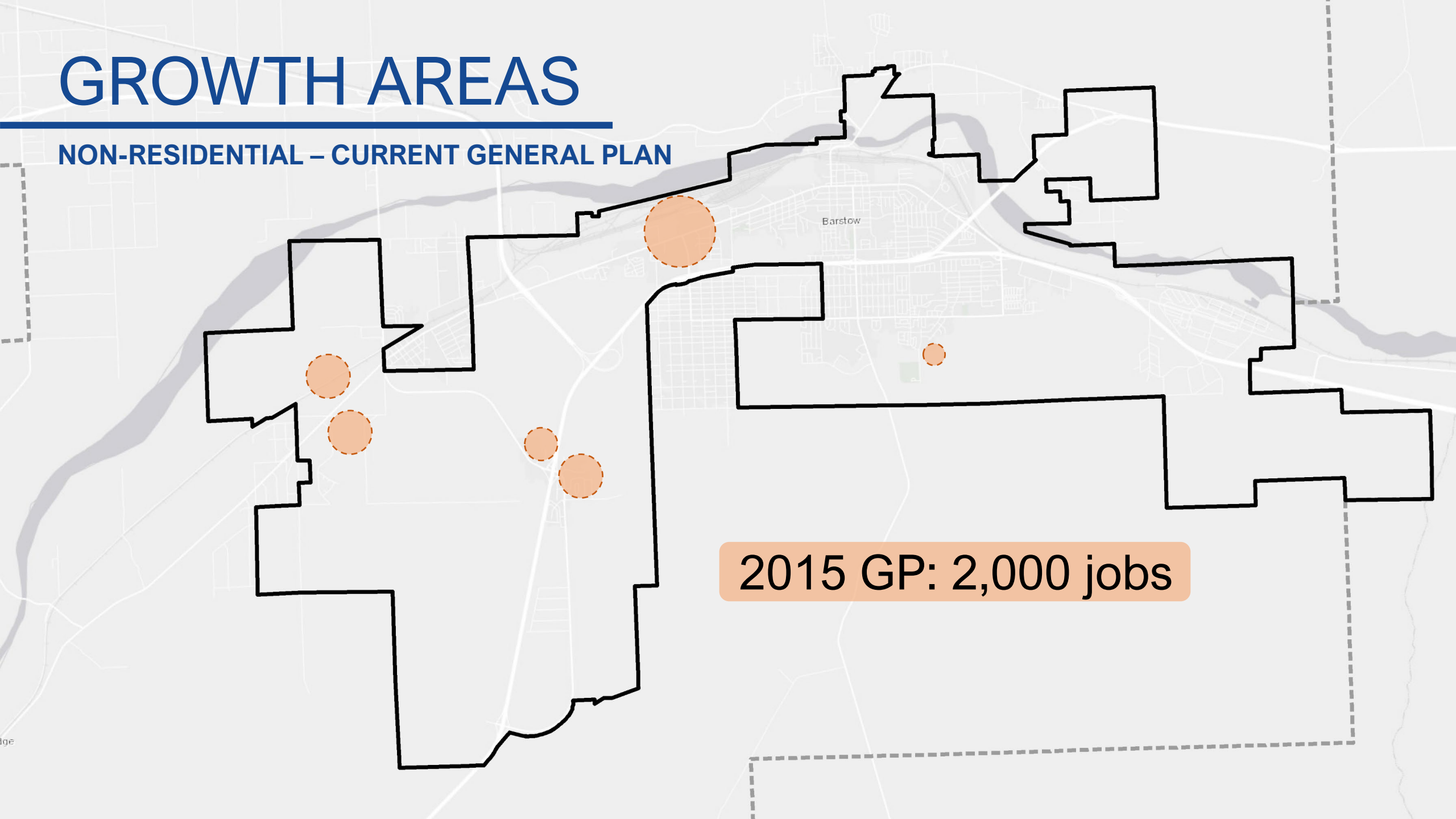
2015 GP: 2,000 homes

Devt Interest: 4,000 homes



# GROWTH AREAS

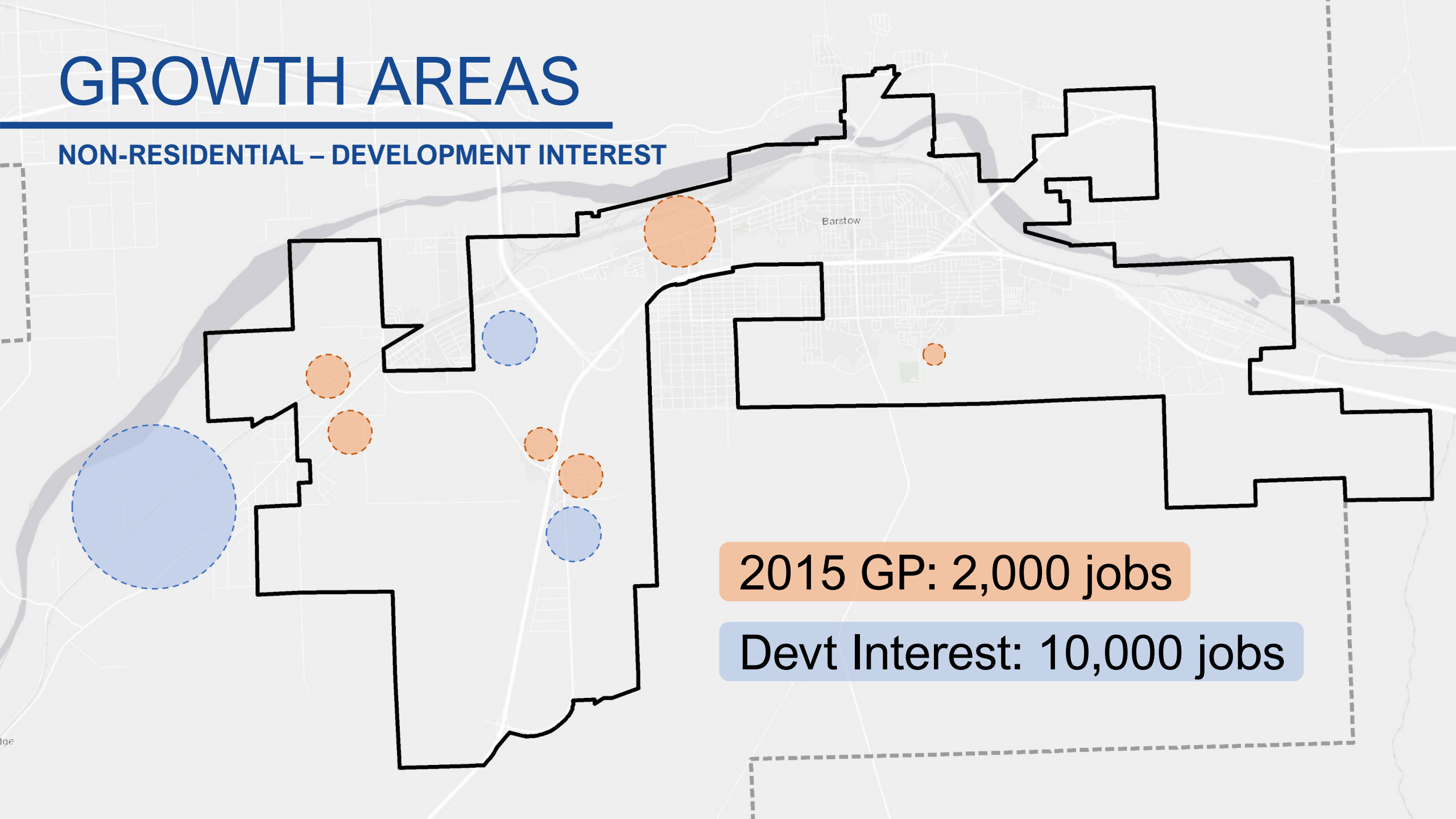
NON-RESIDENTIAL – CURRENT GENERAL PLAN



2015 GP: 2,000 jobs

# GROWTH AREAS

NON-RESIDENTIAL – DEVELOPMENT INTEREST

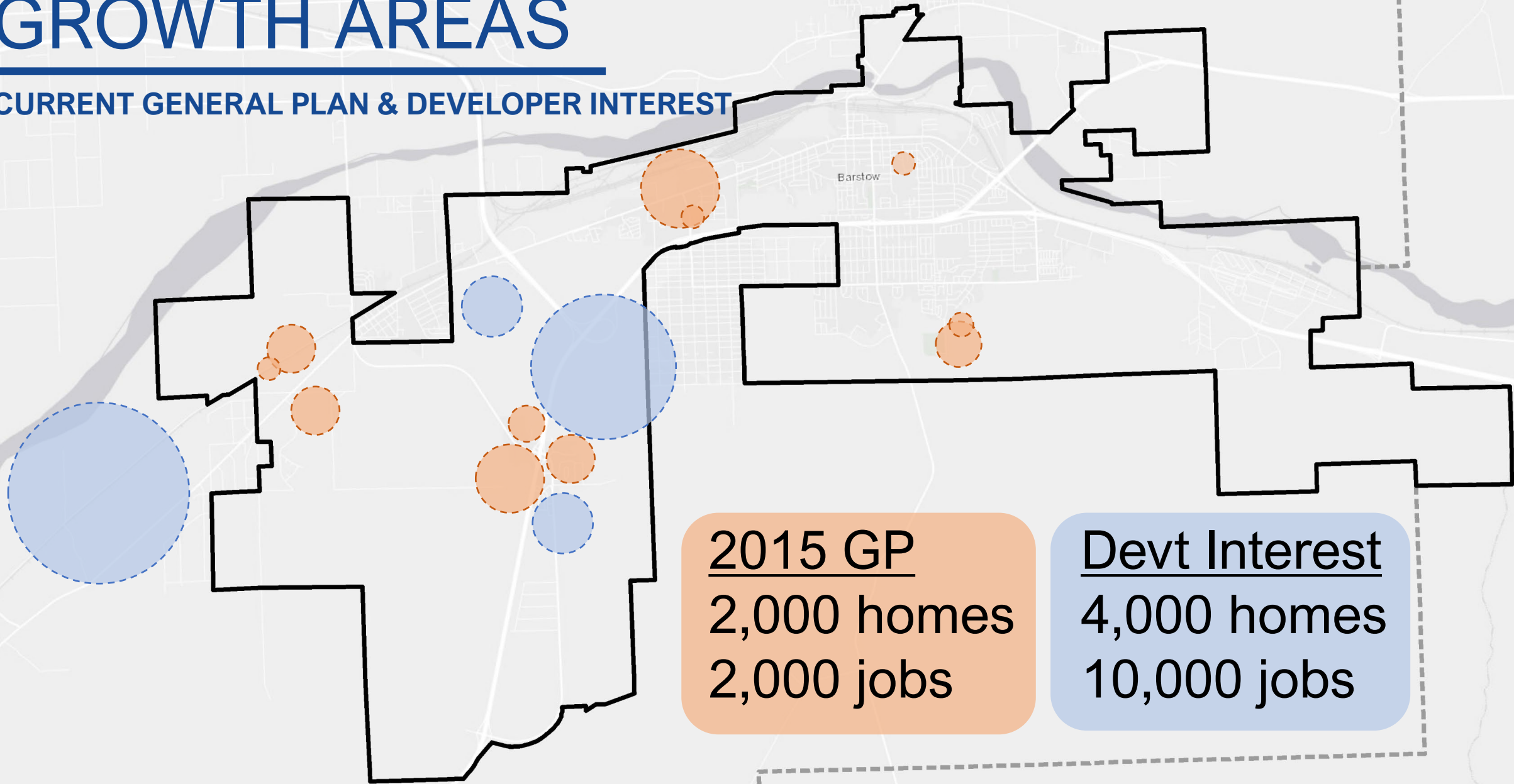


2015 GP: 2,000 jobs

Devt Interest: 10,000 jobs

# GROWTH AREAS

## CURRENT GENERAL PLAN & DEVELOPER INTEREST



2015 GP  
2,000 homes  
2,000 jobs

Devt Interest  
4,000 homes  
10,000 jobs



# Planning Implications

- Built environment
  - How to arrange existing and new land uses
  - Improve and expand transportation, utility, and other infrastructure systems
  - Amount and type of new housing
- Natural environment
  - Grow while preserving desert environment
  - Energy, air, water, mineral resources



# Planning Implications

- Barstow community
  - New jobs and training opportunities
  - School, park, and recreation facilities
  - Cultural and historic resources
- City of Barstow
  - Prioritizing and budgeting improvements
  - Providing community services / public safety
  - Partnerships with public and private entities



# GENERAL PLAN TOPICS (AKA “ELEMENTS”)

TOWN HALL | APRIL 2023



GENERAL PLAN 2045



# LAND USE

An aerial photograph of a city during sunset. A wide, multi-lane road runs vertically through the center of the frame. To the left of the road, there is a residential neighborhood with small houses and a commercial area with a gas station and other buildings. To the right of the road, there is a large, open area with some industrial or commercial buildings, a parking lot, and a dirt road. The background shows a vast, flat landscape under a sky with orange and yellow clouds.

- Enhance and protect existing neighborhoods
- Encourage new development while ensuring land use compatibility
- Facilitate access to amenities and employment opportunities



# SAFETY



- Revisit 2021 update
- Flooding
- Seismic activity
- Extreme heat and drought
- Climate adaptation and resiliency
- Emergency response
- Planning and evacuation



# ENVIRONMENTAL JUSTICE



- Revisit 2021 update
- New strategies to reduce pollution, improve public facilities, create a healthier Barstow
- Expand opportunities for the community to affect the decision-making process



# CIRCULATION



- Coordinate land use planning with transportation improvements
- Improve infrastructure for pedestrians and cyclists
- Identify linkages and connectivity with transit



# OPEN SPACE



- Coordinate parks and recreation with future development
- Increase access to parks and open spaces for existing and future residents
- Protect sensitive areas from development



# HOUSING



- Complete 2021-2029 Housing Element Update
- Improve existing housing and neighborhoods and affirmatively further fair housing
- Reduce constraints for all housing development and facilitate more affordable housing



# NOISE



- Promote compatibility between land uses, especially those sensitive to noise
- Reduce or minimize sources of unwanted noise



# CONSERVATION



- Protect and promote cultural and historic resources
- Conserve natural resources: biological, water, air, mineral, energy

# COMMUNITY OUTREACH

TOWN HALL | APRIL 2023



GENERAL PLAN 2045



# Previous Outreach

- 2016 – Active Transportation Plan
- 2018 – Healthy Cities
- 2020 – Safety and resiliency
- 2020 – Environmental justice
- 2021 – Housing
- 2020-2023 – Downtown/Main St.

AUG 2022 to APR 2023  
Stakeholder Meetings on Growth



**CITY OF BARSTOW**  
ACTIVE TRANSPORTATION PLAN

JANUARY 2018

**Environmental  
Justice**



Safety



GENERAL PLAN 2045

# Stakeholder Feedback

Common themes – “Growth will...”

- Create livable wage jobs
- Encourage business investment
- Expand education resources and opportunities
- Improve City infrastructure
- Retain young people





# Educators

*New growth will require...*

- More schools and teachers
- Better technological resources and expanded programs
- Resources to prepare students for new jobs created





# Students

*New growth will require...*

- Safe and fun places for youth to gather outside of school
- Vocational training programs
- Improved parks and outdoor facilities like swimming pools and basketball courts



# Youth Sports

*New growth will require...*

- New and improved sports facilities and equipment
- More after school and summer programs and parks/rec staff
- More daycare and childcare facilities





# Seniors and Veterans

*New growth will require...*

- Expansion of senior center and nutrition program
- New senior housing
- More bus/shuttle service; trips to VA (Victorville & San Bernardino)
- New and improved rehabilitation and convalescent facilities



# Public Safety (Police & Fire)

*New growth will require...*

- Expanded office and training facilities
- More emergency dispatchers and expanded ambulance services
- A mobile command post for the police department





# MCLB Barstow

*New growth will require...*

- Entry-level housing for young soldiers and higher end housing for senior military
- Sewer improvements
- Expansion of veteran hiring program
- Partnerships for training and security





# US Army / Ft. Irwin

*New growth will require...*

- Additional childcare options
- Expanded public transit service
- More entertainment, shopping, and restaurants
- A wider range of healthcare providers





# Healthcare

*New growth will require...*

- More modern medical facilities with expanded range of providers
- Expanded mental health, homeless services, and addiction prevention/treatment
- Additional public safety personnel and medical staff



# Homeward Bound

*New growth will require...*

- Additional emergency shelters for a variety of different needs including singles, couples, and families
- Affordable housing
- Substance abuse programs, counseling, and mental health facilities





# Ministerial

*New growth will require...*

- Safe community and family activities
- More parks and improvements for existing parks
- Expanded counseling and drug rehab programs
- New transitional housing



# Real Estate

*New growth will require...*

- Community beautification and expanded code enforcement
- Incentives for homebuyers and homebuilders
- More amenities for potential residents including restaurants, parks, and entertainment venues





# Barstow Businesses

*New growth will require...*

- Trade schools
- More amenities geared towards children and their families along with clean and safe streets
- A commitment to local purchasing
- Leveraging Barstow's history as a unique marketing advantage





# Lenwood Rd Businesses

*New growth will require...*

- Job training programs including technical training
- Communication with the community on new development
- Street maintenance
- Positive representation of the community to outsiders



GENERAL PLAN 2045



# Silver Valley

*New growth will require...*

- A master plan for Silver Valley
- Promotion of railroad history to tourists
- Coordination in applying for grants to be used for community improvement



# NEXT STEPS IN THE PROCESS

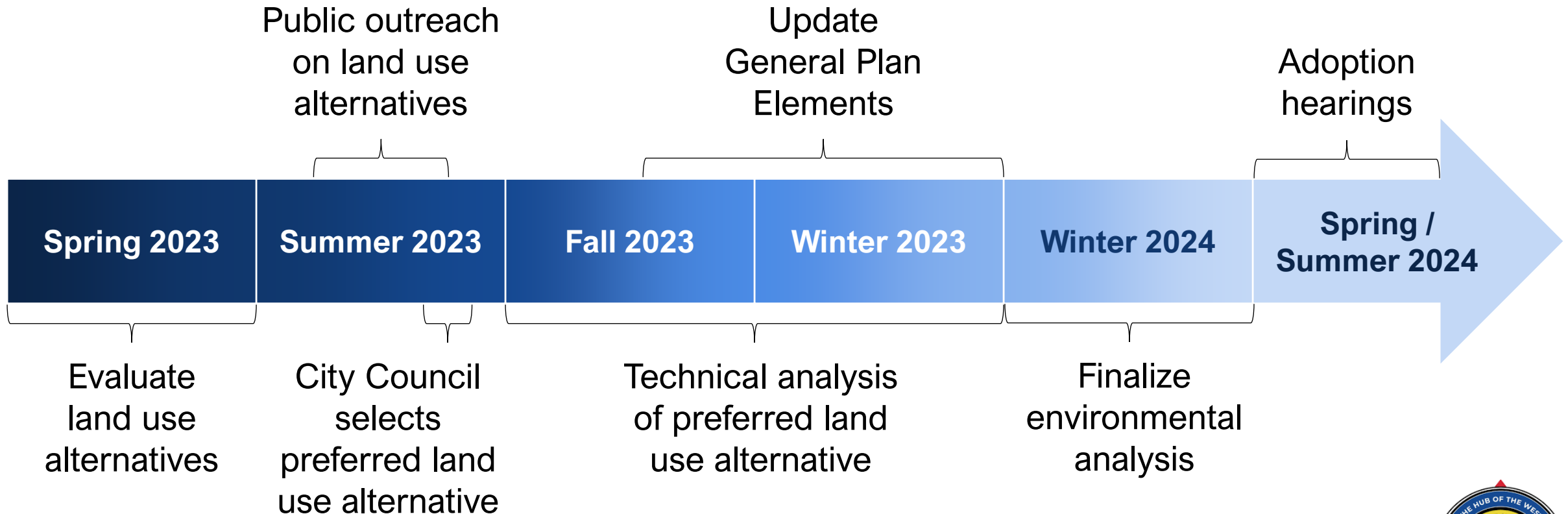
TOWN HALL | APRIL 2023



GENERAL PLAN 2045



# General Plan Update Timeline



*ABOVE TIMELINE IS ESTIMATED AND SUBJECT TO CHANGE*



# Getting the word out

The City is using diverse forms of media to inform the public and invite them to be part of shaping the General Plan.

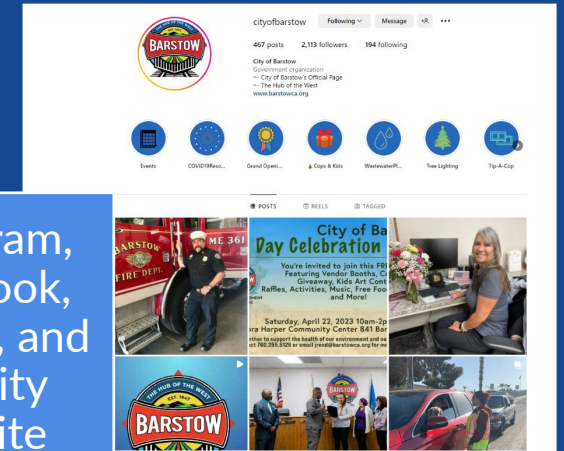
Local Radio  
– English &  
Spanish



Chamber of  
Commerce



Instagram,  
Facebook,  
Twitter, and  
the City  
website





# Community Survey

*Priorities and strategies to:*

- Improve Barstow's quality of life
- Expand housing opportunities
- Improve physical health
- Enhance civic engagement
- Improve community safety

[www.surveymonkey.com/r/BarstowGPU](http://www.surveymonkey.com/r/BarstowGPU)



## Barstow Community Survey | Encuesta comunitaria de Barstow

### Community Survey | Encuesta comunitaria

**A community survey for those who live, learn, or work in Barstow.** Welcome and thank you for taking the time to tell us your thoughts about how to improve the City of Barstow. Your input will be used to inform changes to the City's long-term Vision and General Plan. Please click "next" for a brief overview of the General Plan Update, which will then be followed by a brief survey.

#### Why complete this survey?

By completing this survey, you are directly informing change and participating in the City of Barstow's General Plan Update. Your responses will help the City draft policies to be included in the Plan, which will guide future programs and decisions aimed at making Barstow a safer, healthier, and more prosperous community.

**Encuesta comunitaria para aquellos que viven, aprenden o trabajan en Barstow.** Bienvenido y gracias por tomarse el tiempo para contarnos sus pensamientos sobre cómo mejorar la ciudad de Barstow. Su opinión se utilizará para informar los cambios a la Visión y el Plan General a largo plazo de la Ciudad. Haga clic en "siguiente" para obtener una breve descripción de la Actualización del Plan General, que luego será seguida por una breve encuesta.

#### ¿Por qué completar esta encuesta?

Al completar esta encuesta, usted está informando directamente al cambio y participando en la Actualización del Plan General de la Ciudad de Barstow. Sus respuestas ayudarán a la Ciudad a redactar políticas para ser incluidas en el Plan, que guiarán futuros programas y decisiones destinadas a hacer de Barstow una comunidad más segura, saludable y próspera.

1. \*Please select a language/Por favor seleccione un idioma

- English
- Español



GENERAL PLAN 2045

# Opportunities to Get Involved

- Open House (July 2023)
- Submit comments & questions via e-mail [generalplan@barstowca.org](mailto:generalplan@barstowca.org)
- Visit the City website [www.barstowca.org](http://www.barstowca.org)
- Online survey [www.surveymonkey.com/r/BarstowGPU](http://www.surveymonkey.com/r/BarstowGPU)

