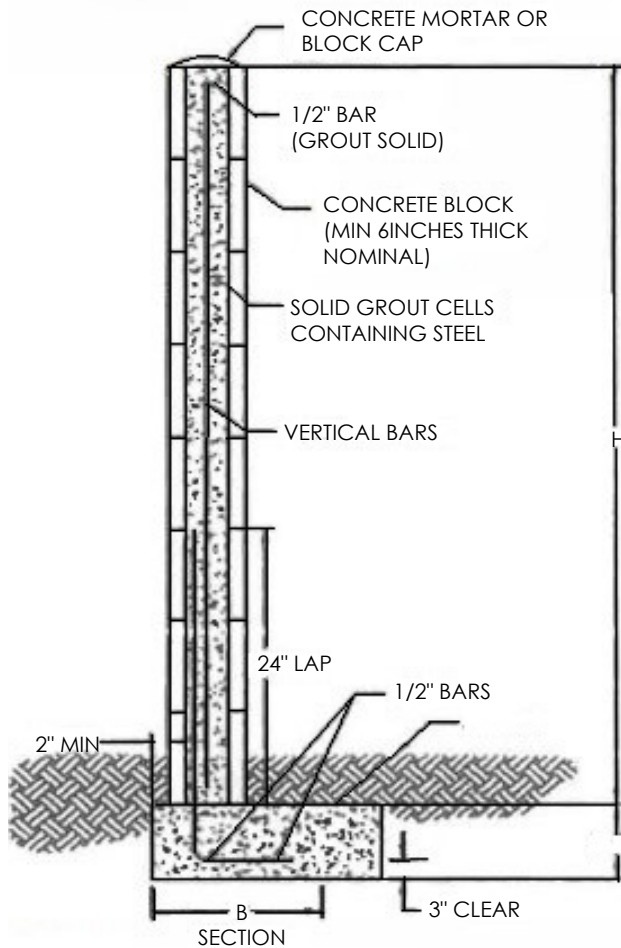


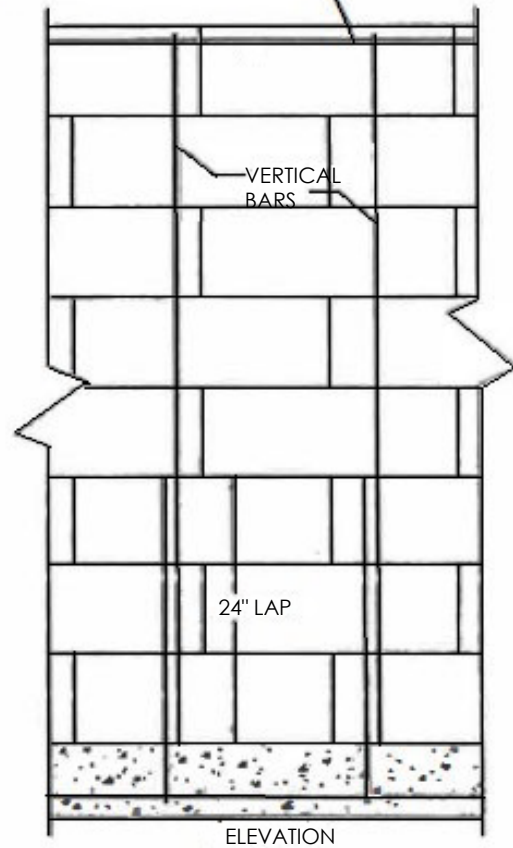


COMMUNITY DEVELOPMENT DEPARTMENT  
 220 E MOUNTIAN VIEW ST. STE A  
 BARSTOW, CA 92311  
 760-255-5161

## GARDEN WALL (NON RETAINING) CANTILEVER-TYPE FOOTING (FOR USE ON PROPERTY LINES)



ONE INCH 1/2" HORIZONTAL BAR IN TOP OF WALL LAP 24 INCHES AT SPLICES



**NOTES:**

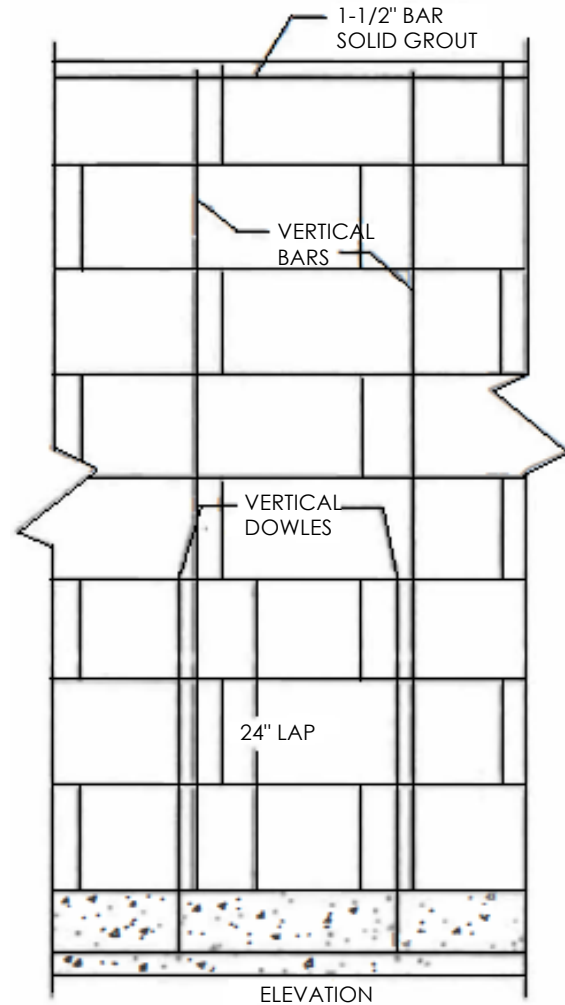
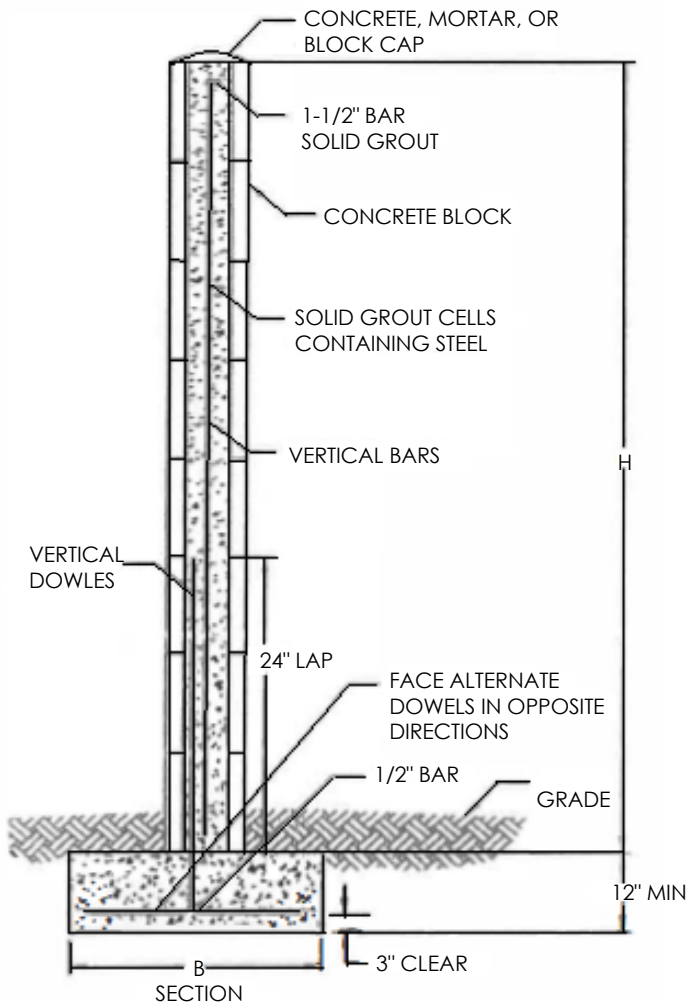
1. THE MAXIMUM ALLOWABLE HEIGHT IS 6'-0". CHECK WITH THE BUILDING DEPARTMENT FOR OTHER HEIGHT RESTRICTIONS IN BUILDING SETBACK.
2. SOLID GROUT CELLS CONTAINING STEEL
3. CELLS REQUIRED TO BE GROUTED ARE TO BE IN VERTICAL ALIGNMENT AND FREE FROM OBSTRUCTIONS. LAY BLOCK IN 1/2 BOND.
4. FOOTINGS TO BE DUG 12" MINIMUM INTO UNDISTURBED SOIL.
5. FOOTINGS WHERE THE SURFACE OF THE GROUND SLOPES MORE THAN 1 FOOT IN 10 FEET SHALL BE LEVEL OR SHALL BE STEPPED SO THAT BOTH TOP AND BOTTOM OF SUCH FOOTINGS ARE LEVEL.
6. REQUEST INSPECTIONS AT LEAST ONE BUSINESS DAY PRIOR TO DAY INSPECTION IS NEEDED.
7. REQUEST INSPECTION AND OBTAIN APPROVAL FOR FOOTINGS AND FOOTING STEEL PRIOR TO POURING.
8. REQUEST INSPECTION AND OBTAIN APPROVAL FOR STEEL IN WALL PRIOR TO GROUTING. OBTAIN FINAL INSPECTION AND APPROVAL.

H	B	VERTICAL REINFORCING
6' - 0"	24 INCHES	1/2 INCH AT 32 INCHES ON CENTER
5' - 0"	20 INCHES	1/2 INCH AT 32 INCHES ON CENTER
4' - 0"	16 INCHES	3/8 INCH AT 48 INCHES ON CENTER
3' - 0"	12 INCHES	3/8 INCH AT 48 INCHES ON CENTER

\*MUST PROVIDE PLOT PLAN WITH SPEC



COMMUNITY DEVELOPMENT DEPARTMENT  
 220 E MOUNTIAN VIEW ST. STE A  
 BARSTOW, CA 92311  
 760-255-5161



**NOTES:**

9. THE MAXIMUM ALLOWABLE HEIGHT IS 6'-0". CHECK WITH THE BUILDING DEPARTMENT FOR OTHER HEIGHT RESTRICTIONS IN BUILDING SETBACK.
10. SOLID GROUT CELLS CONTAINING STEEL
11. CELLS REQUIRED TO BE GROUTED ARE TO BE IN VERTICAL ALIGNMENT AND FREE FROM OBSTRUCTIONS. LAY BLOCK IN 1/2 BOND.
12. FOOTINGS TO BE DUG 12" MINIMUM INTO UNDISTURBED SOIL.
13. FOOTINGS WHERE THE SURFACE OF THE GROUND SLOPES MORE THAN 1 FOOT IN 10 FEET SHALL BE LEVEL OR SHALL BE STEPPED SO THAT BOTH TOP AND BOTTOM OF SUCH FOOTINGS ARE LEVEL.
14. REQUEST INSPECTIONS AT LEAST ONE BUSINESS DAY PRIOR TO DAY INSPECTION IS NEEDED.
15. REQUEST INSPECTION AND OBTAIN APPROVAL FOR FOOTINGS AND FOOTING STEEL PRIOR TO POURING.
16. REQUEST INSPECTION AND OBTAIN APPROVAL FOR STEEL IN WALL PRIOR TO GROUTING. OBTAIN FINAL INSPECTION AND APPROVAL.

H	B	VERTICAL REINFORCING
6' - 0"	24 INCHES	1/2 INCH AT 32 INCHES ON CENTER
5' - 0"	20 INCHES	1/2 INCH AT 32 INCHES ON CENTER
4' - 0"	16 INCHES	3/8 INCH AT 48 INCHES ON CENTER
3' - 0"	12 INCHES	3/8 INCH AT 48 INCHES ON CENTER

\*MUST PROVIDE PLOT PLAN WITH SPEC